



GERALDEVE



AVAILABLE TO LET

Part 5th floor - St Martin's Court

10 Paternoster Row, London, UK EC4M 7HP

GRADE A - FULLY FITTED OFFICES AVAILABLE WITH PRIVATE
ROOF TERRACE - 7,866 SQ FT

GRADE A - FULLY FITTED OFFICES AVAILABLE WITH PRIVATE ROOF TERRACE - 7,866 SQ FT

St Martin's Court is a prime office building which forms part of the landmark Paternoster Square development and lies opposite St Paul's Cathedral. The building is adjacent to St Paul's underground and is in close proximity to retail offerings in the Square as well as One New Change and Cheapside.

Available by way of an assignment expiring in March 2021 with a Tenant only break option in March 2019.

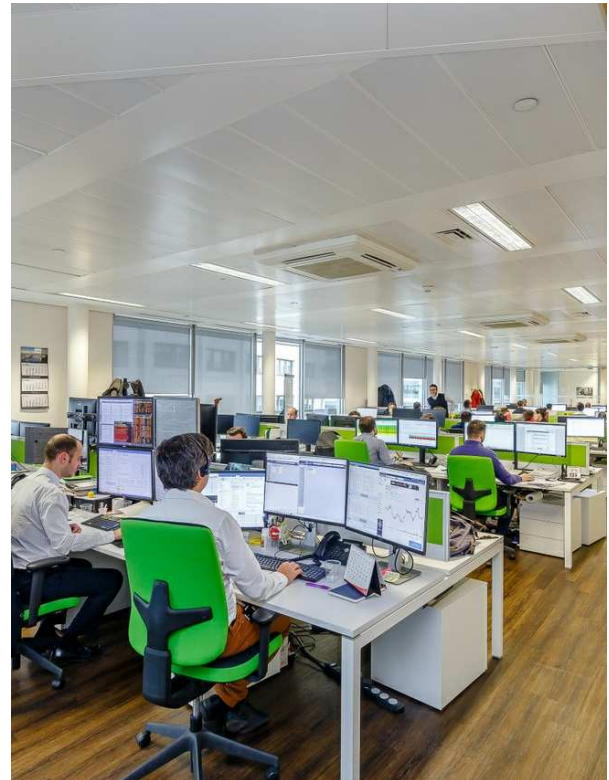
Alternatively a new lease is available direct from the Landlord for a term by arrangement.

Rent £67.50 psf

Size 7,866 sq ft

Marketed by: Gerald Eve (City Office Leasing)

For more information please visit:
<https://realla.co/m/25403-part-5th-floor-st-martin-s-court-10-paternoster-row>



Private Roof Terrace

Spectacular views of St Paul's Cathedral

High quality fit-out

4 pipe fan coil air conditioning

Raised floors

Suspended ceiling

Access to ground floor café

Cycle storage, shower and locker facilities

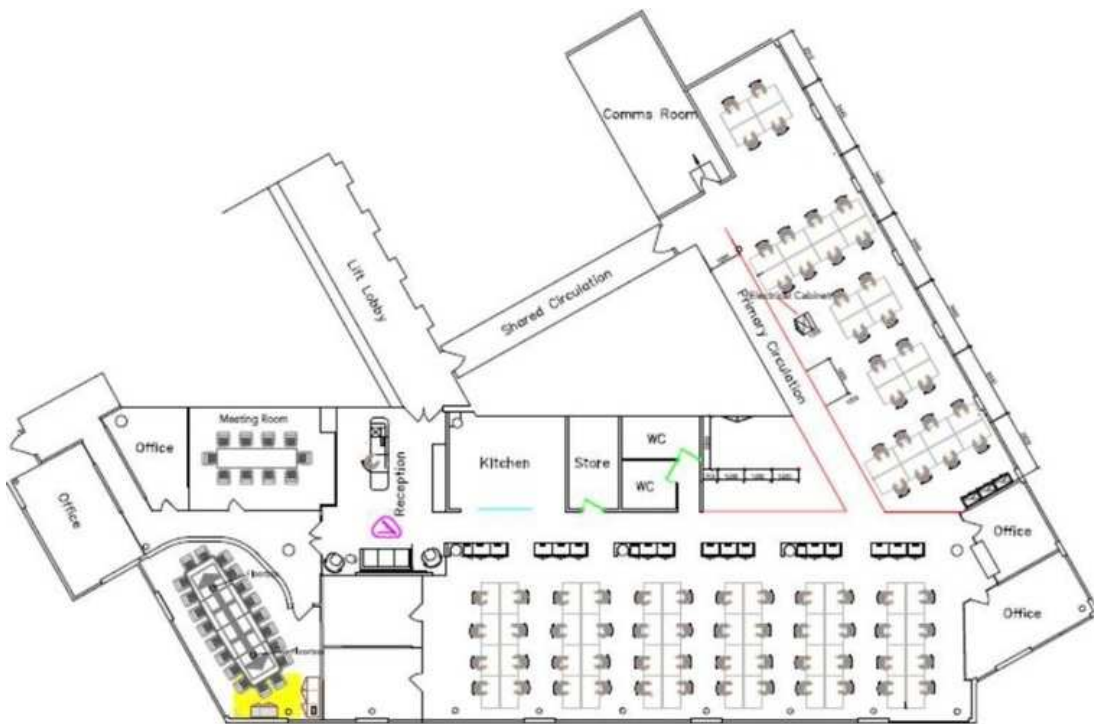




Units & availability

| Floor | Size sq ft | Service charge psf | Rates psf | Notes |
|-------|------------|--------------------|-----------|--------------------------|
| 5th | 7,866 | £13.72 | £23.04 | includes private terrace |

* All sizes NIA



| | |
|----------------------|--|
| Airports | London City 6.7m, London Heathrow 15.8m, London Gatwick 25.6m |
| National rail | City Thameslink 0.2m, London Blackfriars 0.3m, Farringdon 0.4m |
| Tube | St. Pauls 0.1m, City Thameslink 0.2m, Blackfriars 0.3m |
| EPC | Available on request |



020 7489 8900
info@geraldeve.com

Gerald Eve



Amy Bryant

020 7653 6825
075511 72931
abryant@geraldeve.com

Gerald Eve



Steve Johns

020 7653 6858
07833 401249
stevejohns@geraldeve.com

Conditions under which these particulars are issued All details in these particulars are given in good faith, but Gerald Eve LLP for themselves and the Vendors/Lessors of this property for whom they act give notice that:- 1. These particulars do not and shall not constitute, in whole or in part, an offer or a contract or part thereof, and Gerald Eve LLP have no authority to make or enter into any such offer or contract. 2. All statements contained in these particulars are made without acceptance of any liability in negligence or otherwise by Gerald Eve LLP, for themselves or for the Vendors/Lessors. 3. None of the statements contained in these particulars is to be relied on as a statement or representation of fact or warranty on any matter whatsoever, and intending purchasers must satisfy themselves by whatever means as to the correctness of any statements made within these particulars. 4. The Vendors/Lessors do not make, give or imply, nor do Gerald Eve LLP or any person in their employment have any authority to make, give or imply, whether in these particulars or otherwise, any representation or warranty whatsoever in relation to the property. This statement does not affect any statutory rights you may have nor does it intend to limit Gerald Eve's liability which cannot be excluded or limited by law. Particulars issued [December, 2017].