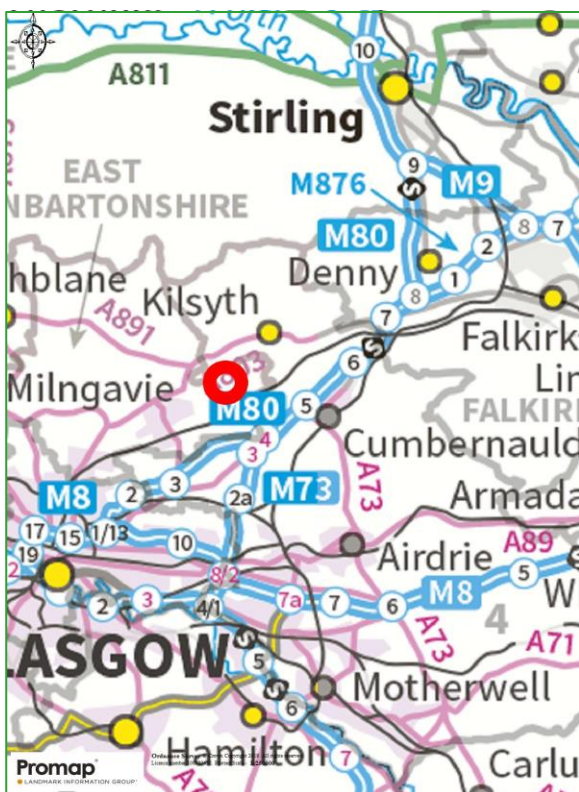


**EXCITING OPPORTUNITY TO SECURE ESTABLISHED
FULLY OPERATIONAL HOTEL AND RESTAURANT**



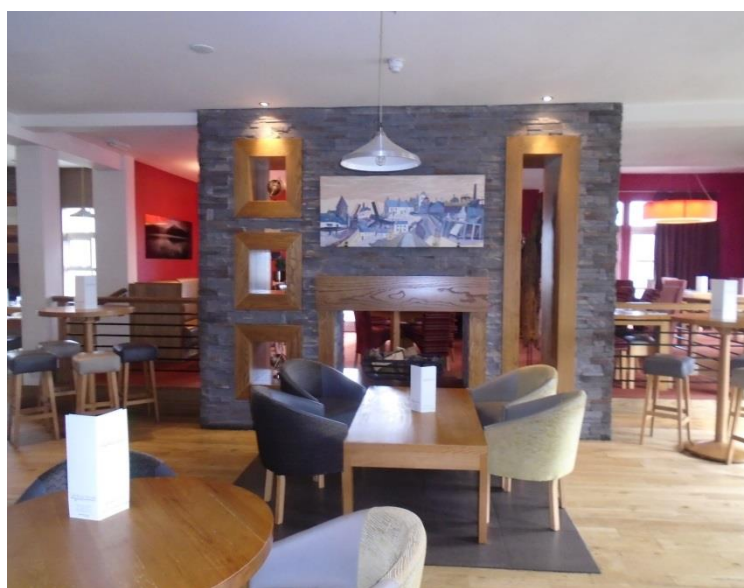
**The Boathouse
Auchinstarry Marina Kilsyth**

- **Excellent destination location on the Forth & Clyde canal**
- **Attractive purpose built 10 bedroom hotel and restaurant adjacent to marina**
- **Benefits from external seating and car parking**
- **Accessible to significant population within 15 minutes drive time**
- **Fully fitted and operational with stabilised trading and potential to take immediate entry**
- **Trading history available to genuine interested parties**
- **Scope for investment to enhance**
- **Rent and flexible lease terms negotiable**

THE BOATHOUSE KILSYTH



GERALDEVE



Viewing & Further Information

By appointment through the sole agents Gerald Eve LLP;

Martin Clarkson
mclarkson@geraldev.com
Tel. 0141 227 2368

John Logan
jlogan@geraldev.com
Tel. 0141 227 2378



Conditions under which these particulars are issued

All details in these particulars are given in good faith, but Gerald Eve LLP for themselves and the Vendors/Lessors of this property for whom they act give notice that:-

1. These particulars do not and shall not constitute, in whole or in part, an offer or a contract or part thereof, and Gerald Eve LLP have no authority to make or enter into any such offer or contract.
2. All statements contained in these particulars are made without acceptance of any liability in negligence or otherwise by Gerald Eve LLP, for themselves or for the Vendors/Lessors.
3. None of the statements contained in these particulars is to be relied on as a statement or representation of fact or warranty on any matter whatsoever, and intending purchasers must satisfy themselves by whatever means as to the correctness of any statements made within these particulars.
4. The Vendors/Lessors do not make, give or imply, nor do Gerald Eve LLP or any person in their employment have any authority to make, give or imply, whether in these particulars or otherwise, any representation or warranty whatsoever in relation to the property.

The statement does not affect any potential liability under the Property Misdescriptions Act 1991. Particulars issued April 2019